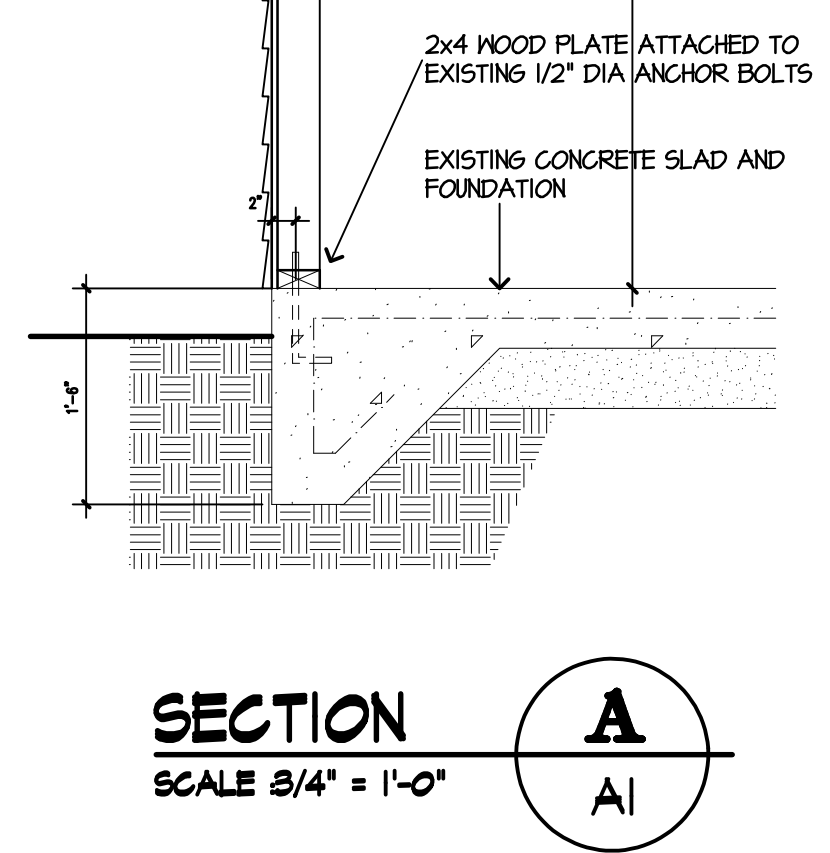
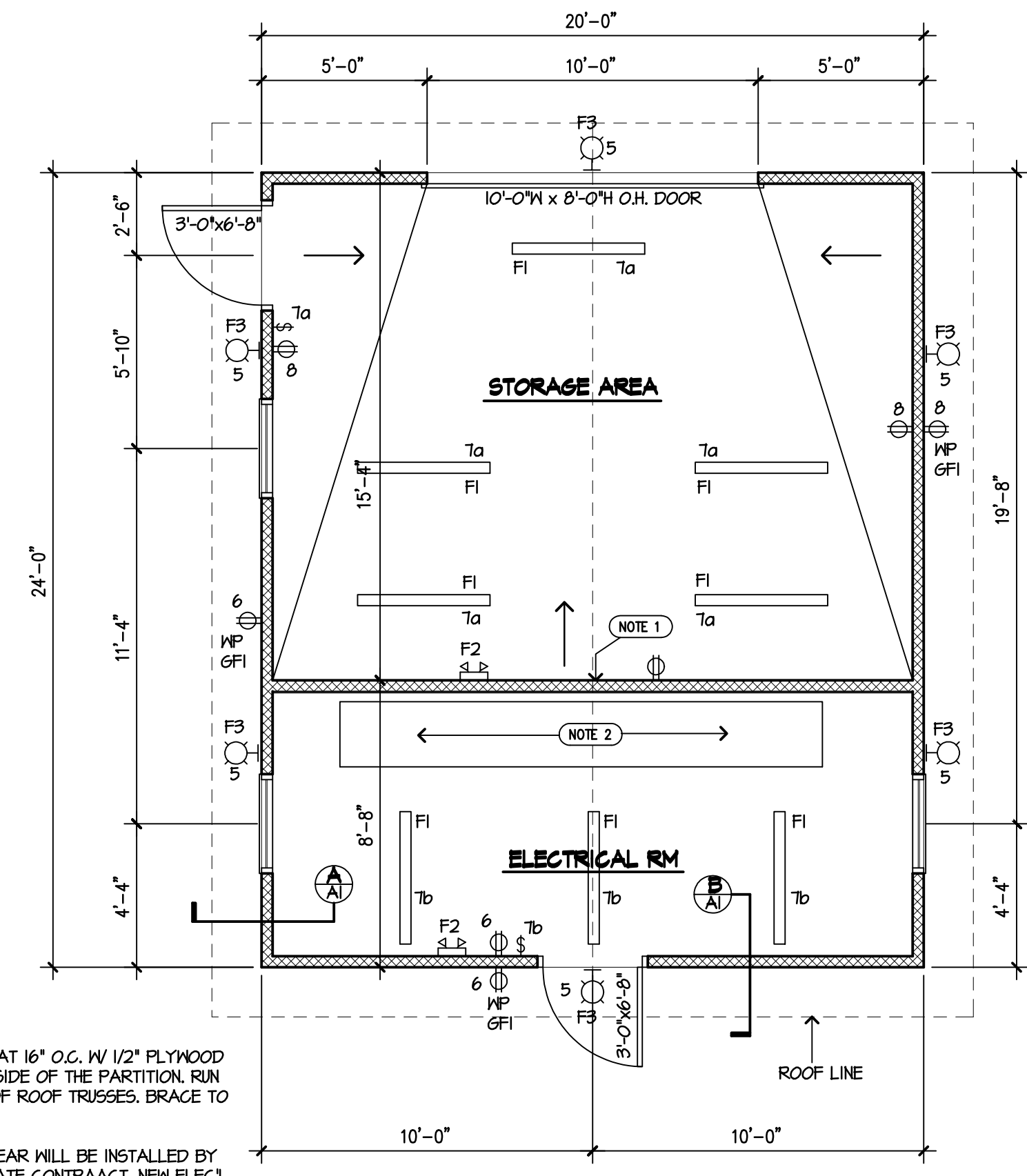
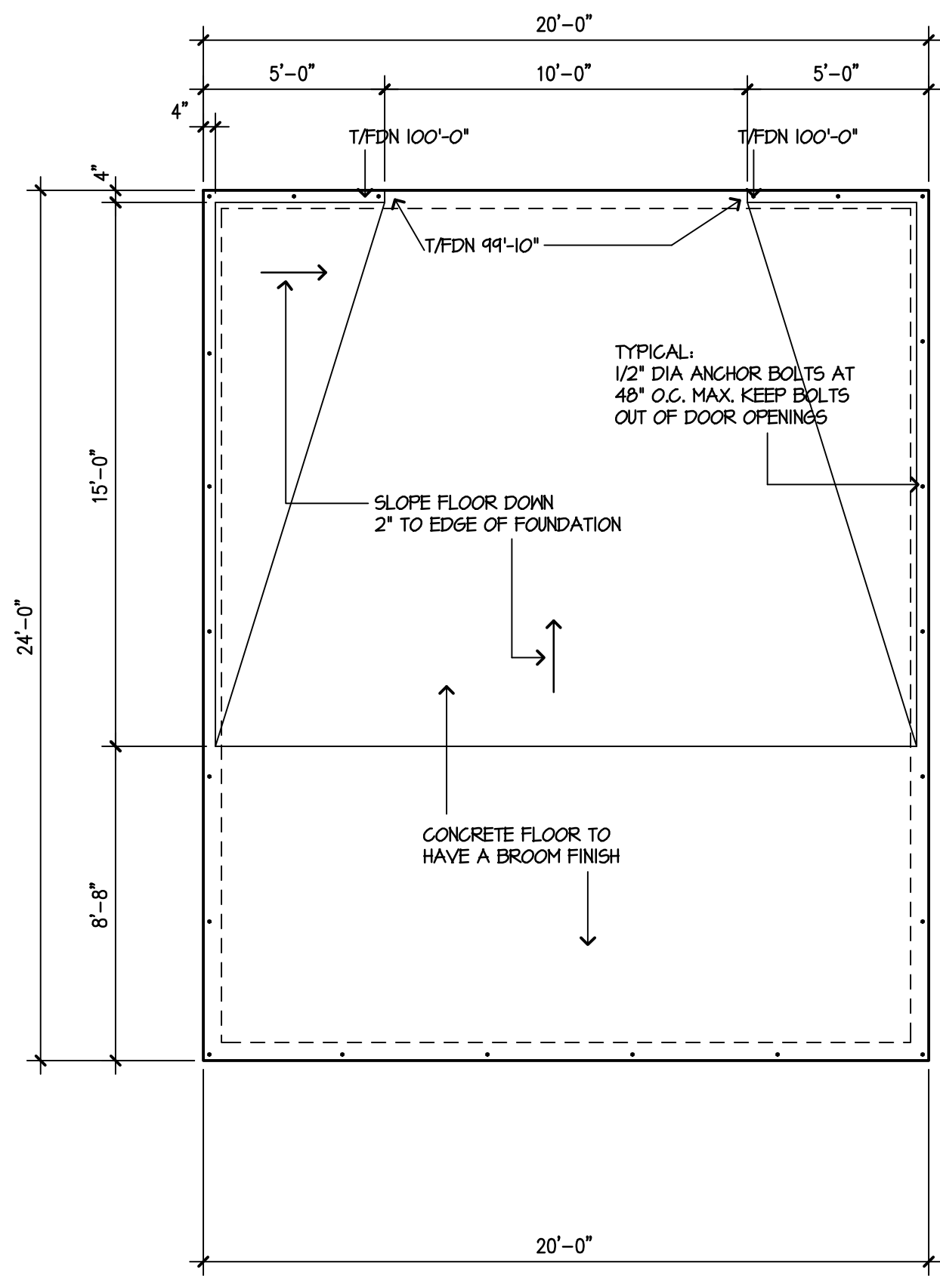


TAG	MANUFACTURER CATALOG NBR	LAMPS	DESCRIPTION	MOUNTING HT. & TO FLOOR
F1	METALIX 4-SSF-2-28TS-UNV-GL-1N	FLUORESCENT 2-15-28W	CEILING MTD STRIP LIGHTING	MT TO BOTTOM OF TRUSSES
F2	SURE-LITES AA1-SLC-6-8	INCANDESCENT 9W	SURFACE MOUNTED WALL PACK	SEE PLAN
F3	STONCO LP-7-T	LED 7-HI-LUMEN	WALL MNTD	SEE SEC'S

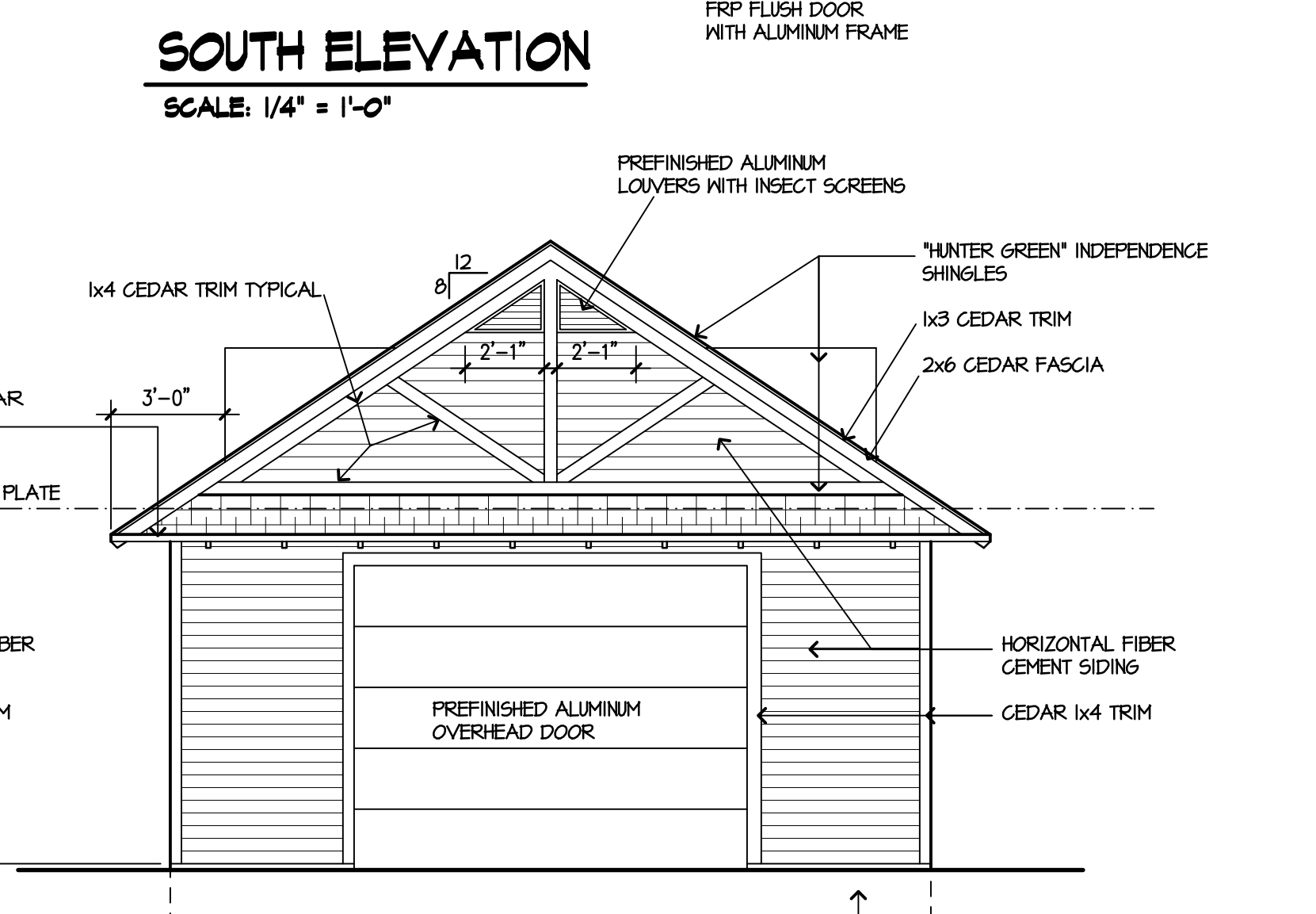
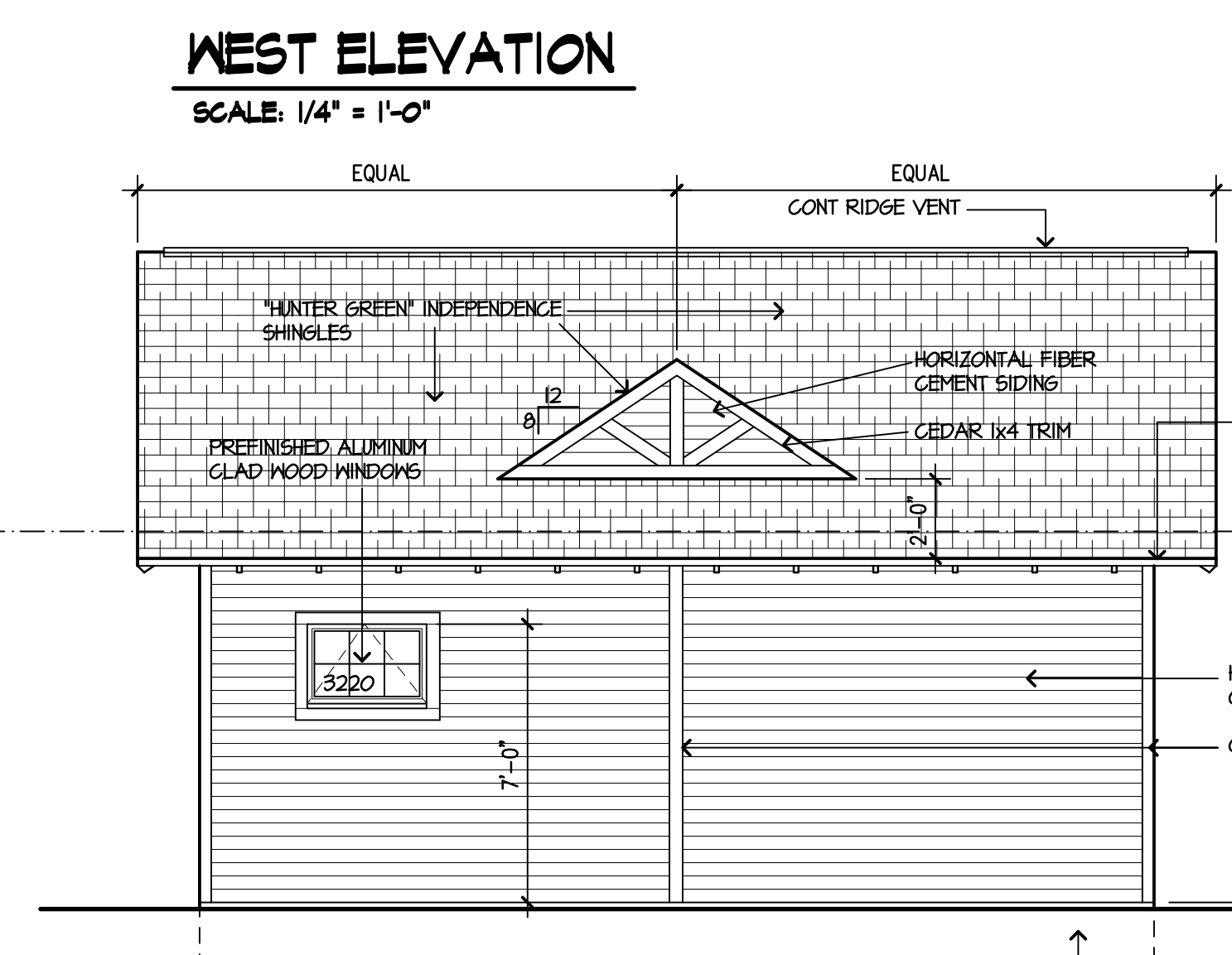
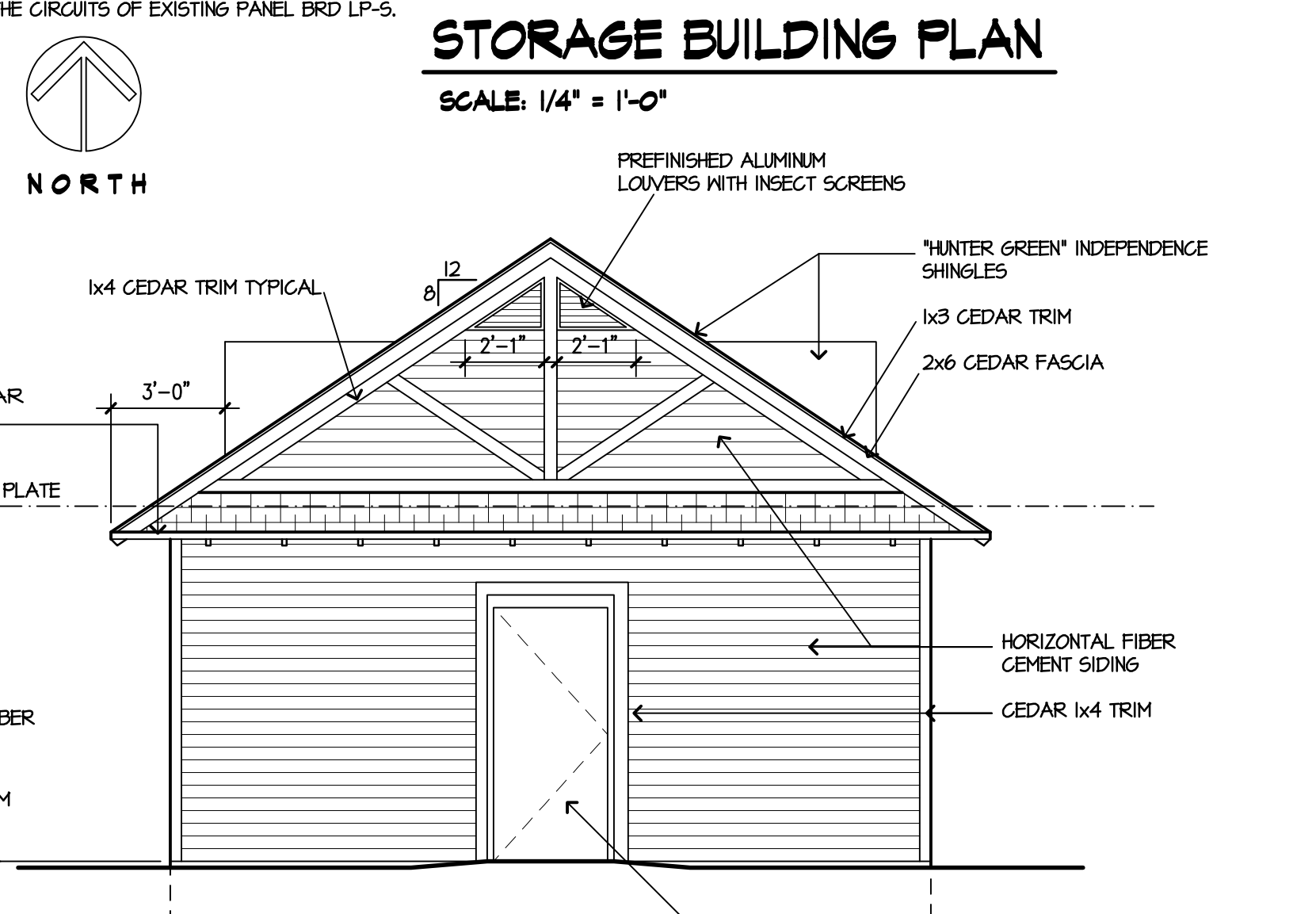
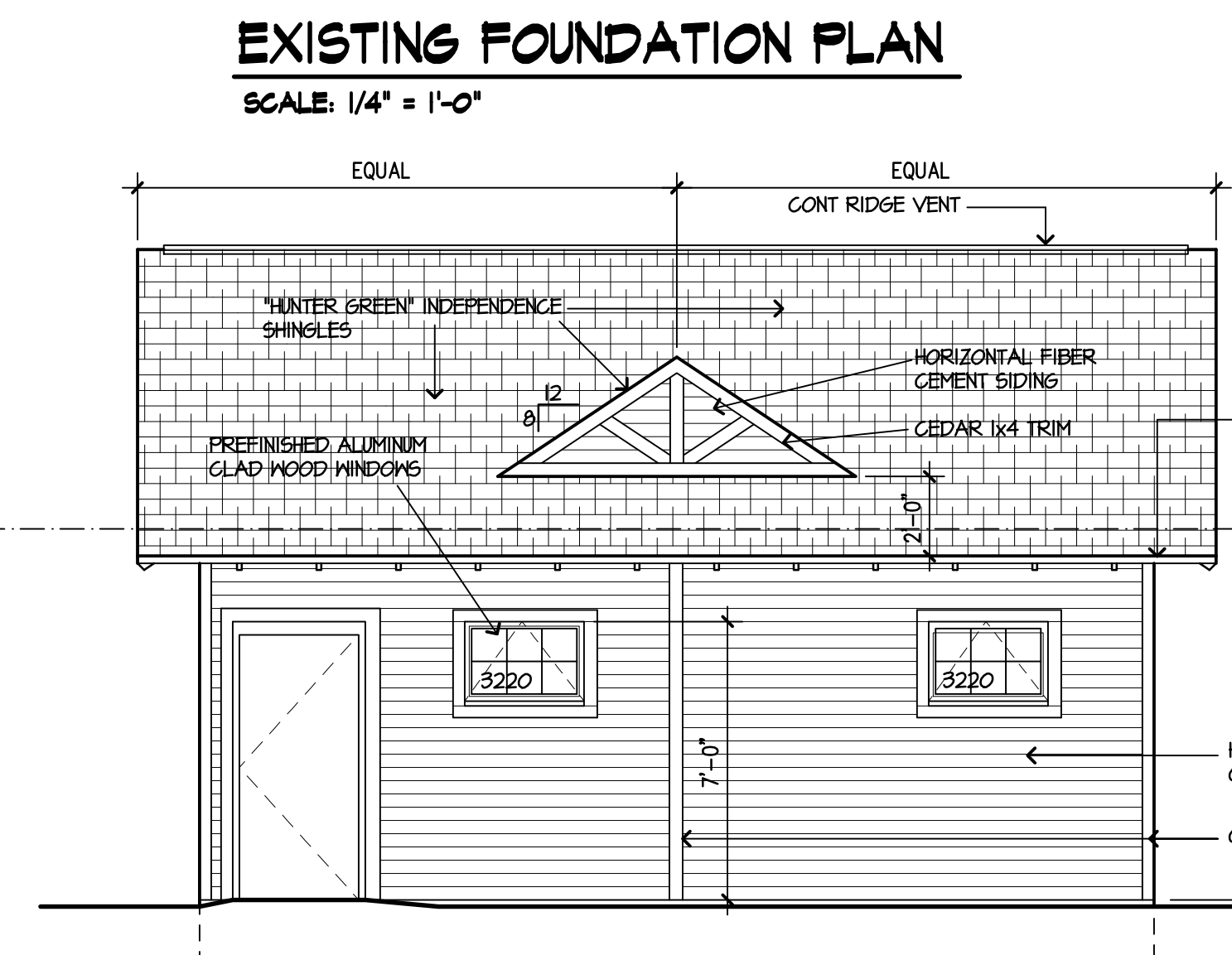
⊖ ← CIRCUIT NUMBER
 HQ ← FIXTURE TYPE



NOTES:
 ALL EXTERIOR FIBER CEMENT SIDING AND TRIM, PLYWOOD AND TRUSS ENDS TO BE STAIN/PAINTEED PER THE SPECIFICATIONS. THE DOORS AND FRAMES AND ALL THE INTERIOR SURFACES ARE NOT TO BE PAINTED.



NOTES:
 NOTE 1 PARTITION TO BE 1/2" PLYWOOD ON THE ELECTRICAL ROOM SIDE OF THE PARTITION. RUN PARTITION TO UNDER SIDE OF ROOF TRUSSES. BRACE TO TRUSSES AT 32" O.C.
 NOTE 2 MAIN ELECTRICAL SWITCH GEAR WILL BE INSTALLED BY THE OWNER UNDER A SEPARATE CONTRACT. NEW ELEC'L SHOWN ON THIS PLAN IS PART OF THE BASE BID AND IS TO BE TIED INTO THE CIRCUITS OF EXISTING PANEL BRD LP-5.



PRELIMINARY REVIEW
 NOT FOR CONSTRUCTION