



Community Center & Administrative Offices

2600 Center Drive • Woodridge • IL • 60517

Phone (630) 353 • 3300

Fax (630) 353 • 3310

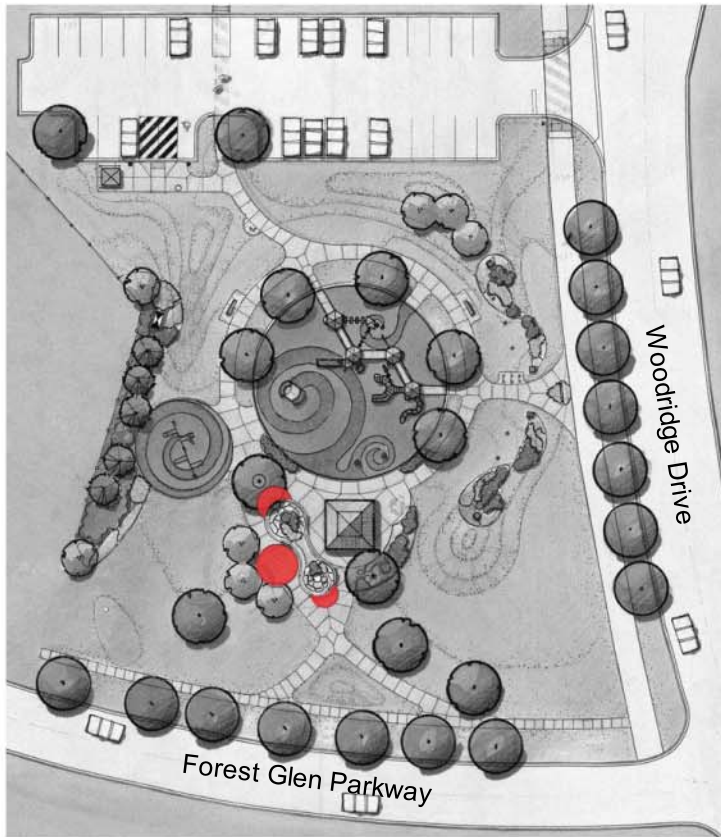
www.woodridgeparks.org

info@woodridgeparks.org

Forest Glen Park Engraved Paver Program

Woodridge Park District is offering a limited opportunity to leave your mark and your personalized message on the new Forest Glen Park. These permanent brick pavers will create a lasting tribute to someone special. Celebrate an event or establish a memorial for a loved one. Proceeds from the sale of the pavers will go towards the development of this unique park.

- Cost: \$125 per engraved paver
Paver Size: 4 inches x 8 inches
Engraved Text: Limited to 3 lines of text with 13 characters/spaces per line.



Engraved Paver Locations

- Engraved Paver Installation Areas



Engraved Paver Example

For more information or to place an order contact Ryan Bordewick, Landscape Designer at 630-353-3300 or by email at rbordewick@woodridgeparks.org