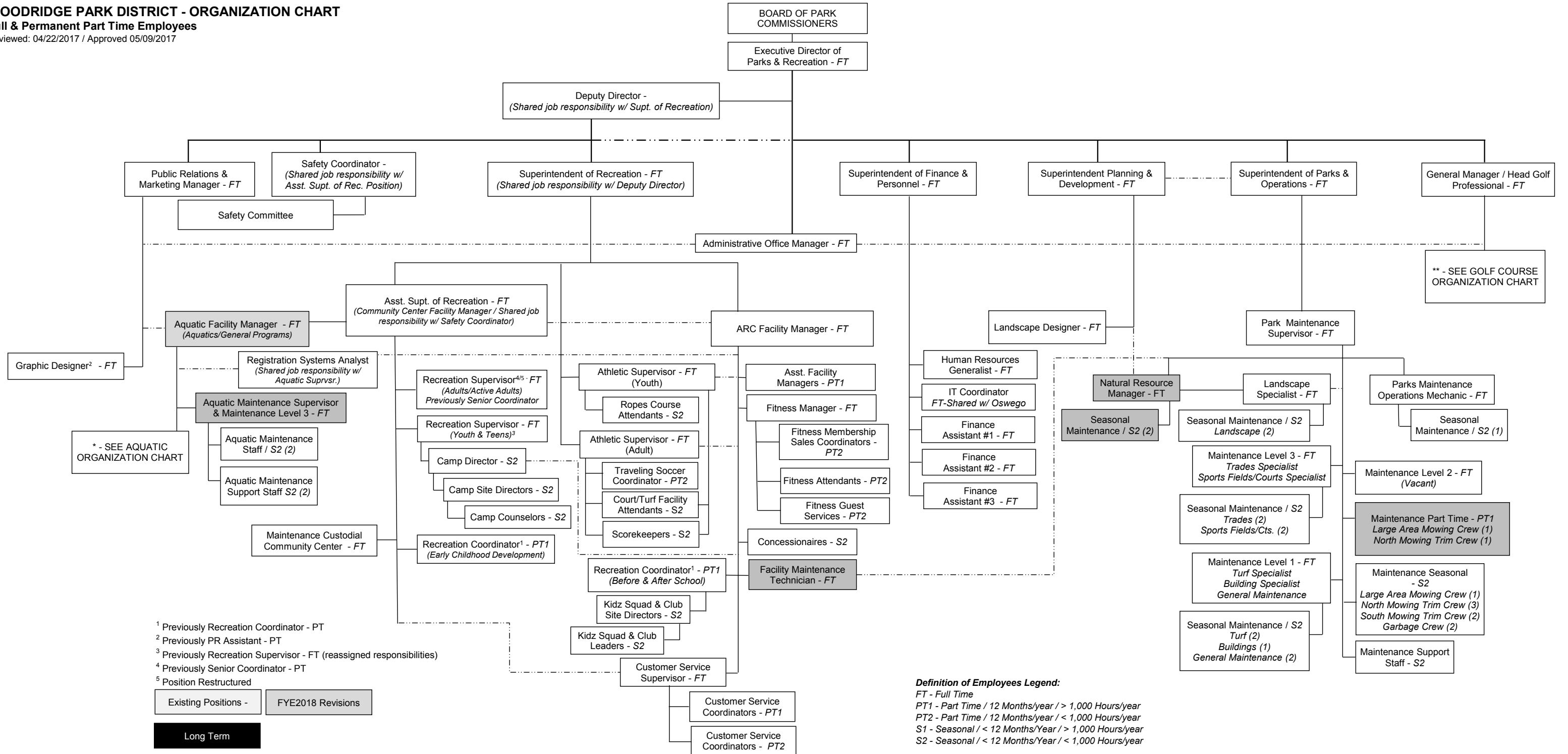




WOODRIDGE PARK DISTRICT - ORGANIZATION CHART

Full & Permanent Part Time Employees

Reviewed: 04/22/2017 / Approved 05/09/2017



¹ Previously Recreation Coordinator - PT
² Previously PR Assistant - PT
³ Previously Recreation Supervisor - FT (reassigned responsibilities)
⁴ Previously Senior Coordinator - PT
⁵ Position Restructured

Existing Positions -	FYE2018 Revisions
Long Term	

Definition of Employees Legend:
 FT - Full Time
 PT1 - Part Time / 12 Months/year / > 1,000 Hours/year
 PT2 - Part Time / 12 Months/year / < 1,000 Hours/year
 S1 - Seasonal / < 12 Months/Year / > 1,000 Hours/year
 S2 - Seasonal / < 12 Months/Year / < 1,000 Hours/year

** - SEE GOLF COURSE ORGANIZATION CHART

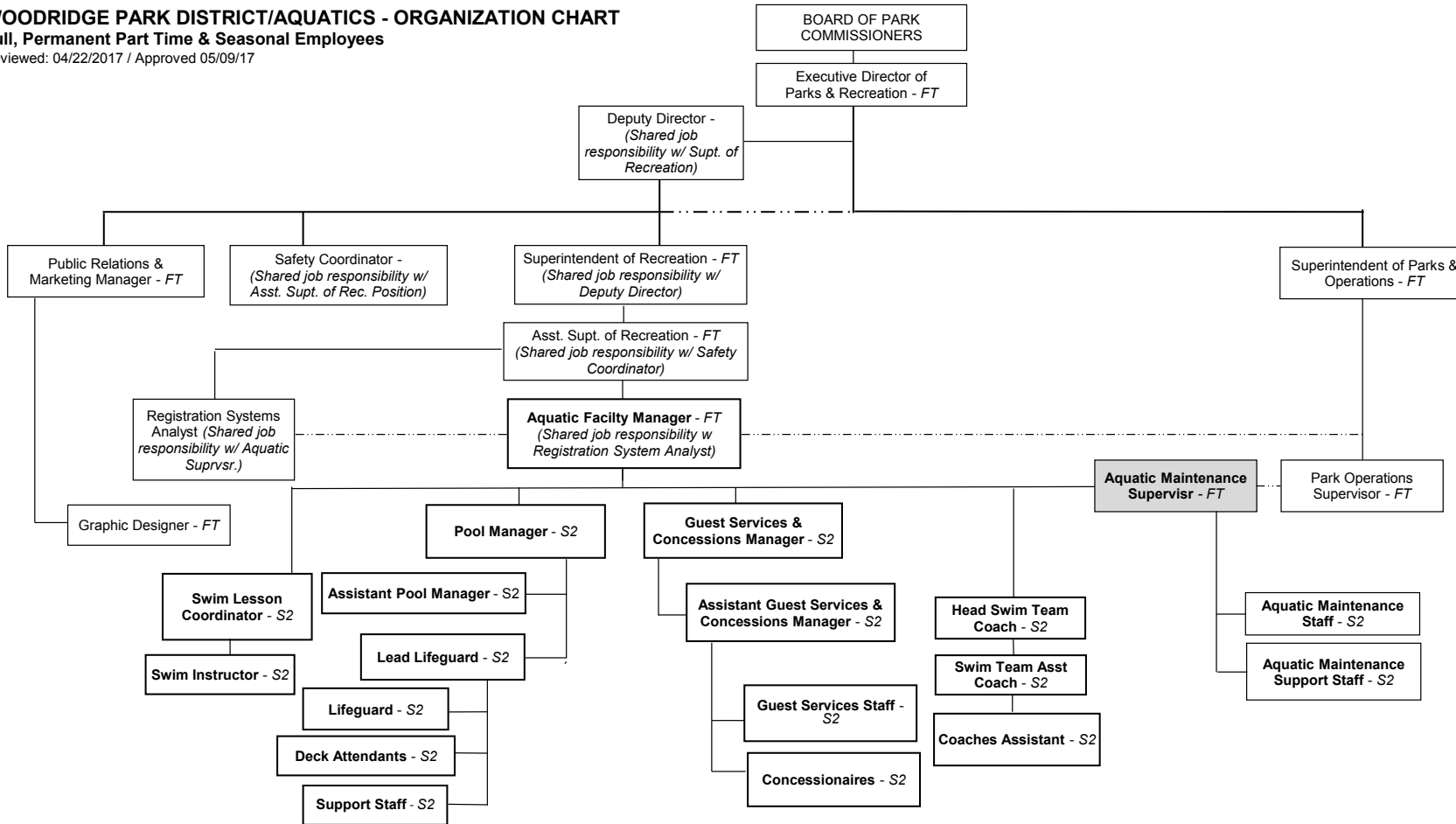
* - SEE AQUATIC ORGANIZATION CHART



WOODRIDGE PARK DISTRICT/AQUATICS - ORGANIZATION CHART

Full, Permanent Part Time & Seasonal Employees

Reviewed: 04/22/2017 / Approved 05/09/17



Definition of Employees Legend:

FT - Full Time

PT1 - Part Time / 12 Months/year / > 1,000 Hours/year

PT2 - Part Time / 12 Months/year / < 1,000 Hours/year

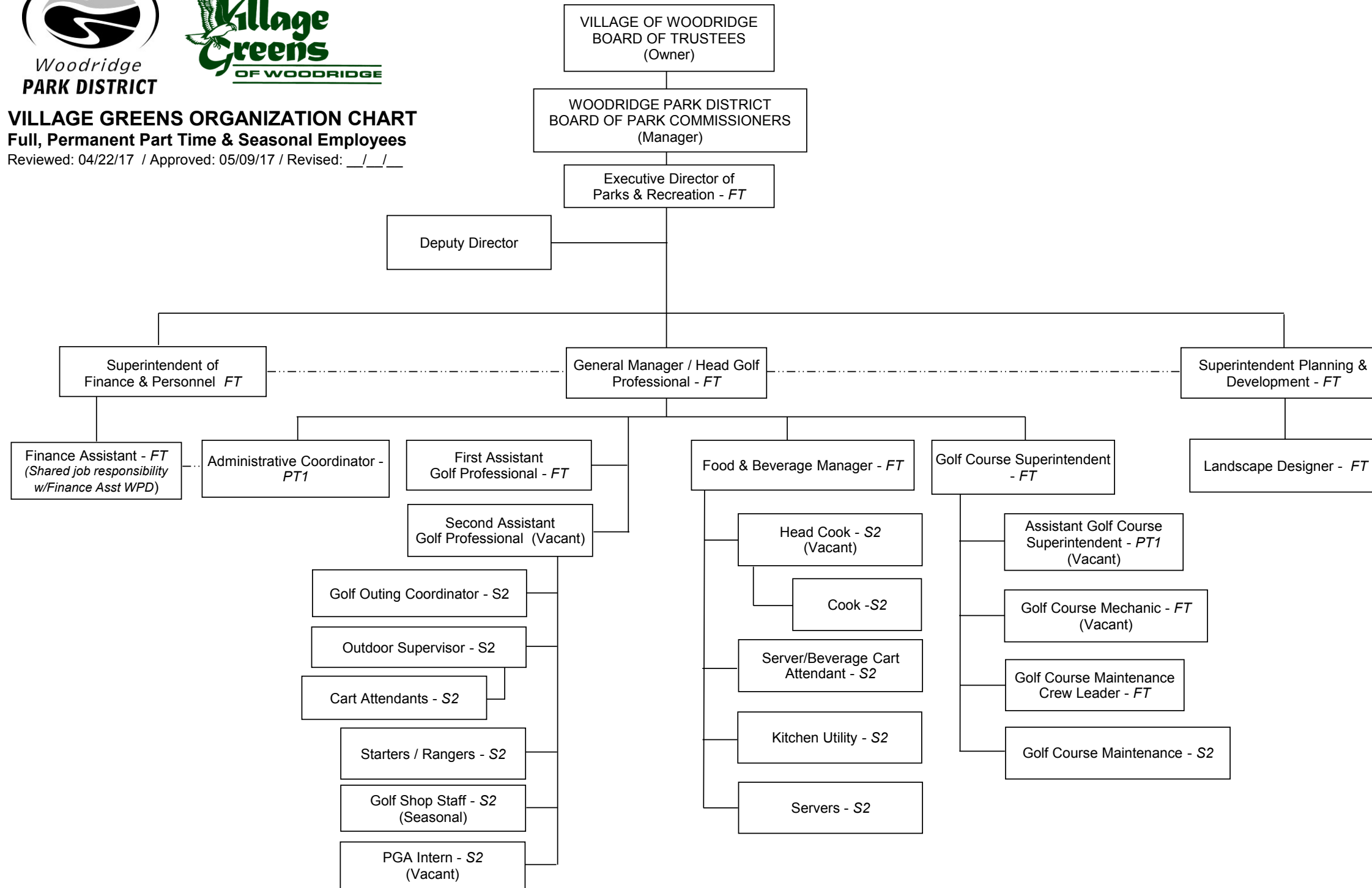
S1 - Seasonal / < 12 Months/Year / > 1,000 Hours/year

S2 - Seasonal / < 12 Months/Year / < 1,000 Hours/year



VILLAGE GREENS ORGANIZATION CHART
Full, Permanent Part Time & Seasonal Employees

Reviewed: 04/22/17 / Approved: 05/09/17 / Revised: __/__/__



Definition of Employees Legend:

- FT - Full Time
- PT1 - Part Time / 12 Months/year / > 1,000 Hours/year
- PT2 - Part Time / 12 Months/year / < 1,000 Hours/year
- S1 - Seasonal / < 12 Months/Year / > 1,000 Hours/year
- S2 - Seasonal / < 12 Months/Year / < 1,000 Hours/year