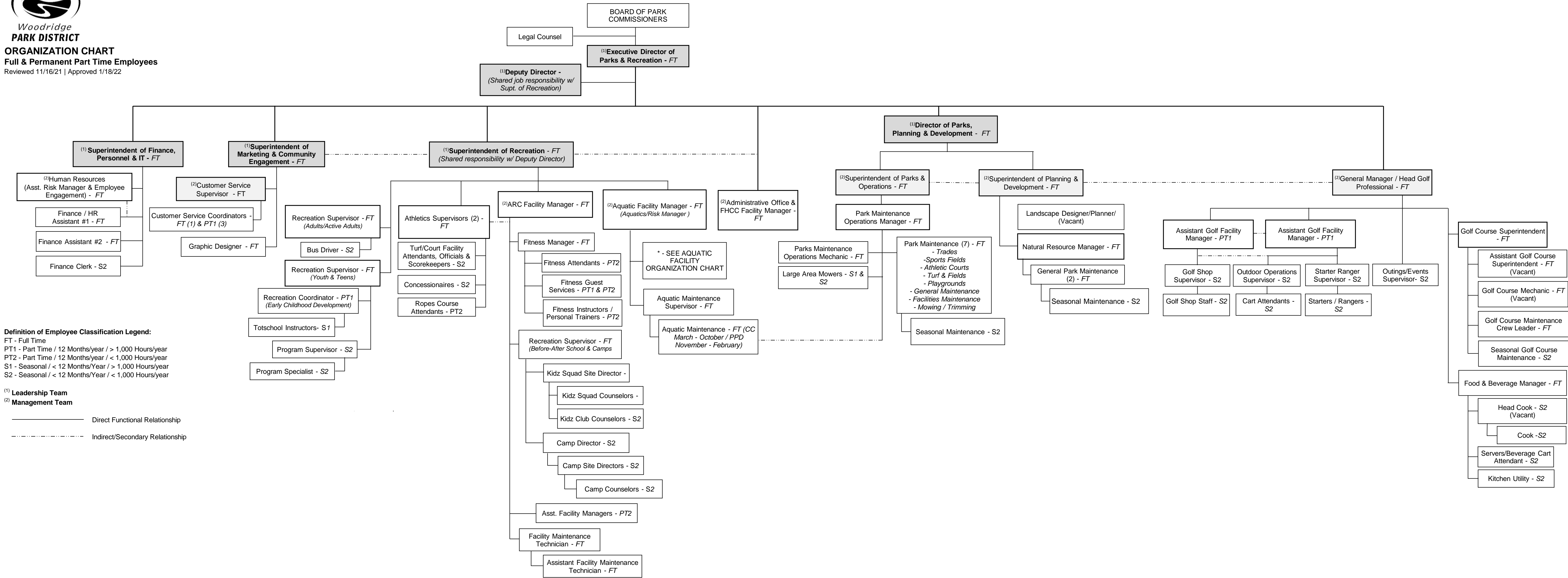




Woodridge
PARK DISTRICT

ORGANIZATION CHART
Full & Permanent Part Time Employees
Reviewed 11/16/21 | Approved 1/18/22



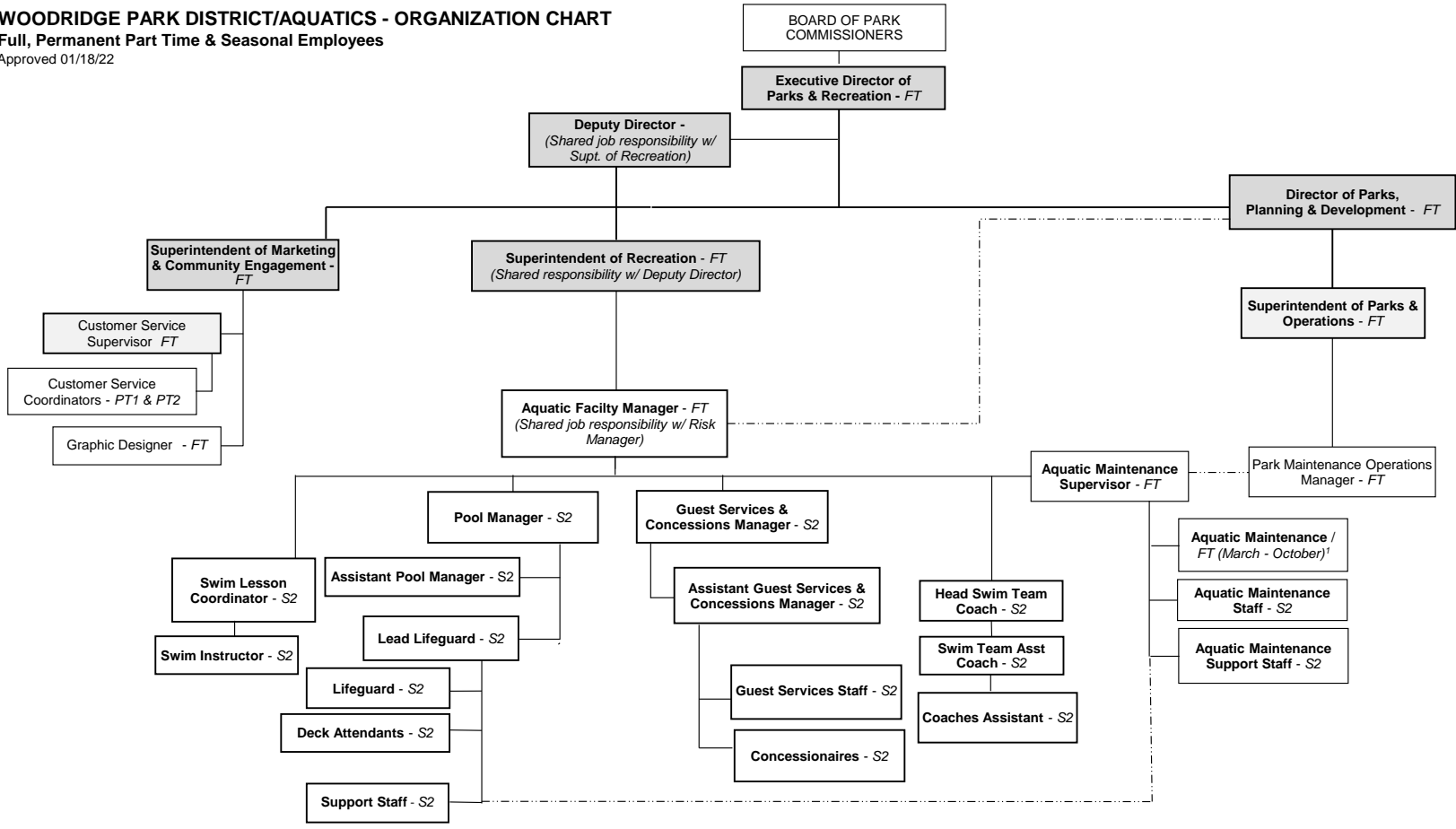
Definition of Employee Classification Legend:
 FT - Full Time
 PT1 - Part Time / 12 Months/year / > 1,000 Hours/year
 PT2 - Part Time / 12 Months/year / < 1,000 Hours/year
 S1 - Seasonal / < 12 Months/Year / > 1,000 Hours/year
 S2 - Seasonal / < 12 Months/Year / < 1,000 Hours/year

(1) Leadership Team
 (2) Management Team

———— Direct Functional Relationship
 - - - - - Indirect/Secondary Relationship



WOODRIDGE PARK DISTRICT/AQUATICS - ORGANIZATION CHART
 Full, Permanent Part Time & Seasonal Employees
 Approved 01/18/22



¹ Aquatic Maintenance (FT) (Shared between Aquatics & Maintenance)

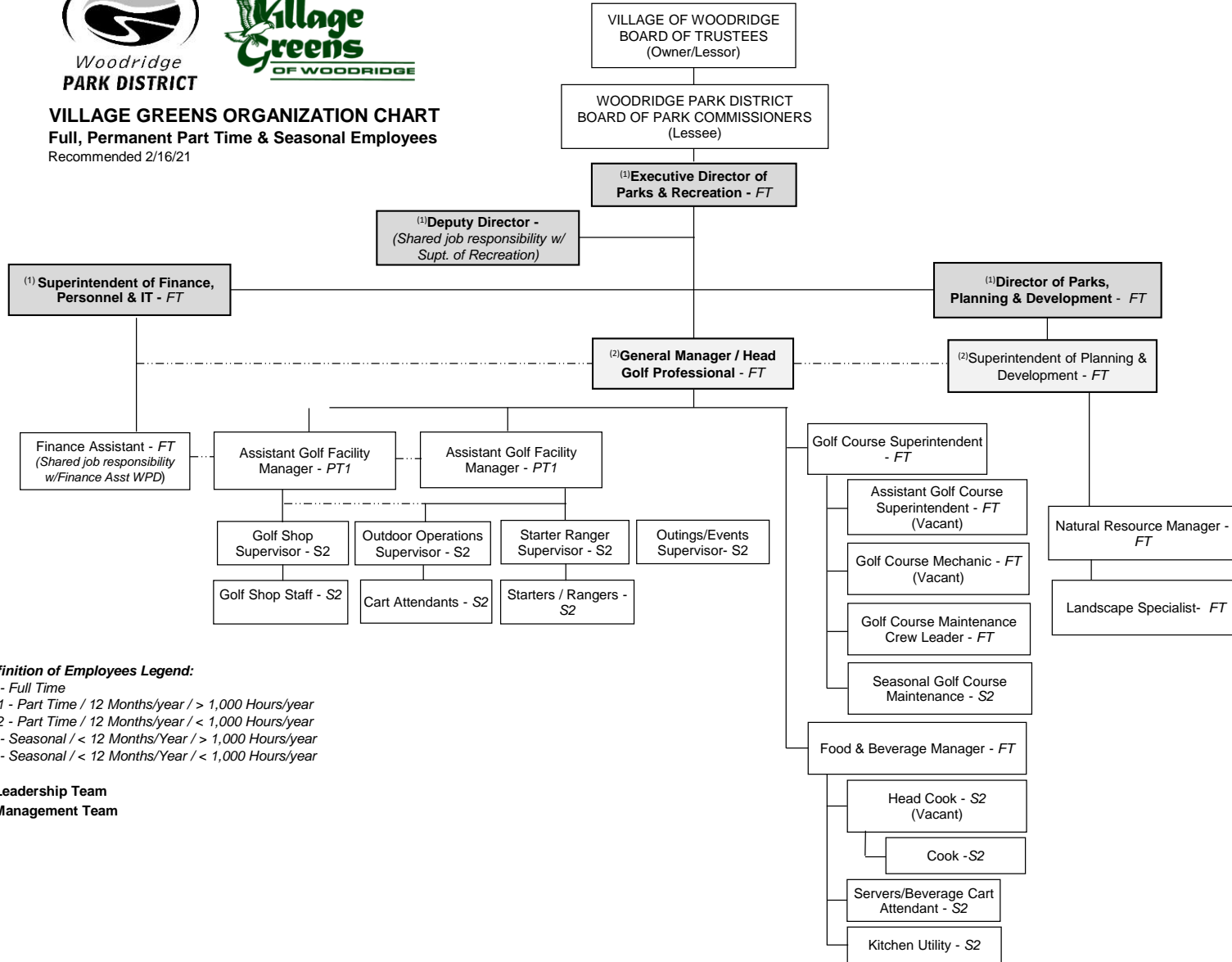
Definition of Employees Legend:

- FT - Full Time
- PT1 - Part
- PT2 - Part Time / 12 Months/year / < 1,000 Hours/year
- S1 - Seasonal / < 12 Months/Year / > 1,000 Hours/year
- S2 - Seasonal / < 12 Months/Year / < 1,000 Hours/year

⁽¹⁾ Leadership Team
⁽²⁾ Management Team



VILLAGE GREENS ORGANIZATION CHART
 Full, Permanent Part Time & Seasonal Employees
 Recommended 2/16/21



Definition of Employees Legend:

- FT - Full Time
- PT1 - Part Time / 12 Months/year / > 1,000 Hours/year
- PT2 - Part Time / 12 Months/year / < 1,000 Hours/year
- S1 - Seasonal / < 12 Months/Year / > 1,000 Hours/year
- S2 - Seasonal / < 12 Months/Year / < 1,000 Hours/year

- (1) Leadership Team
- (2) Management Team