



22 East Chicago Avenue
Suite 200A
Naperville, IL 60540
T 630.961.1787
hitchcock**design**group.com

Jubilee Point Park (Town Centre) Final Design Phase Two

7101 Woodridge Drive, Woodridge, IL 60517

Woodridge Park District
2600 Center Drive, Woodridge, IL 60517

50% Design Development
December 19, 2023

Project Team

Landscape Architect Sheets: L-series
Hitchcock Design Group
22 East Chicago Avenue, Suite 200A
Naperville, Illinois 60540
T 630.961.1787

License Number: 157.000000
Expiration Date: 08.31.202X

Civil Engineer Sheets C-series
Hey and Associates
26575 W Commerce Dr Unit 601,
Volo, IL 60073
T 847.740.0888

Electrical Engineer Sheets E-series
Nova Engineering PC
2338 S Cline Ave,
Schererville, IN 46375
T 219.865.3352

Traffic Engineer Sheets T-series
Primera Engineers
550 W Jackson Blvd #600,
Chicago, IL 60661
T 312.606.0910

General Notes

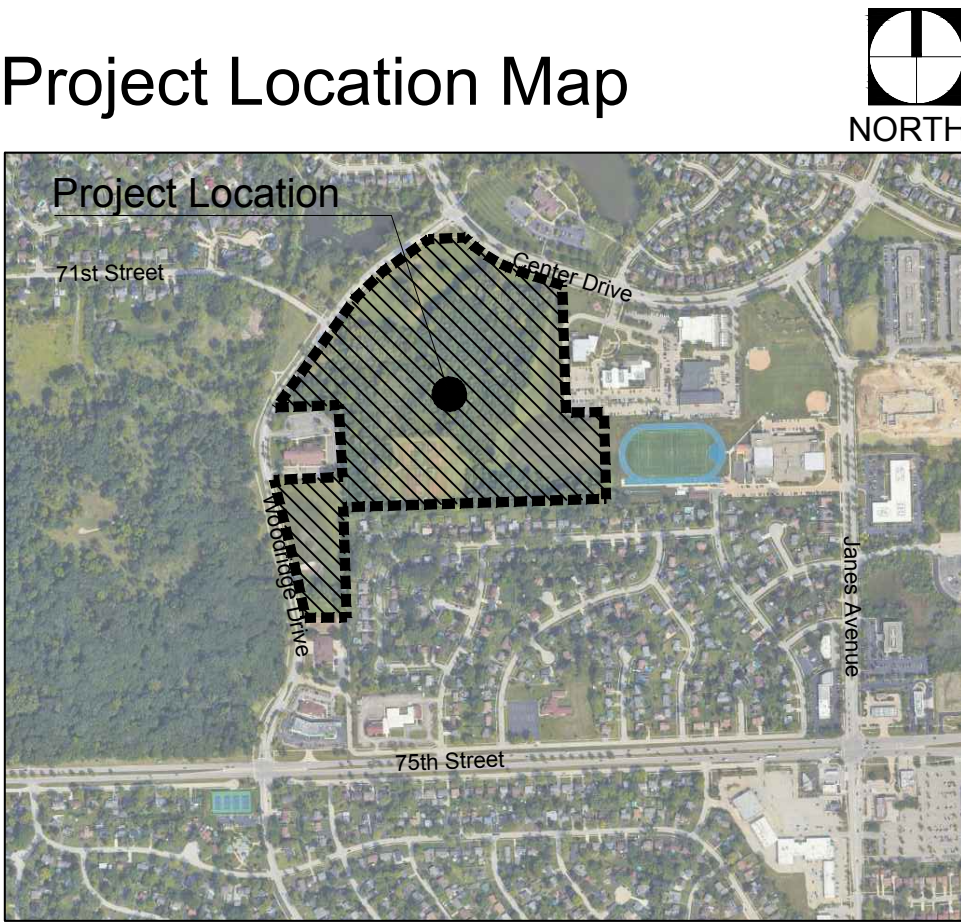
1. Basemap information obtained from plans prepared by DLZ Industrial Surveying, Inc. received May 3, 2023.
2. Verify site conditions and information on drawings. Promptly report any concealed conditions, mistakes, discrepancies or deviations from the information shown in the Contract Documents. The Owner is not responsible for unauthorized changes or extra work required to correct unreported discrepancies.
3. Secure and pay for permits, fees and inspections necessary for the proper execution of this work. Comply with codes applicable to this work.
4. Refer to specifications for additional conditions, standards and notes.
5. The plans and specifications are intended to be completed entirely by the contractor. Unless clearly identified as "By Owner," all work contained within is the responsibility of the general contractor.

Sheet Index

L-Series

| | |
|------|---------------------------------------|
| L3.0 | Layout and Materials Plan - Overall |
| L3.1 | Layout and Materials Plan |
| L3.2 | Layout and Materials Plan |
| L3.3 | Layout and Materials Plan |
| L3.4 | Layout and Materials Plan (Alternate) |

Project Location Map



It's smart.

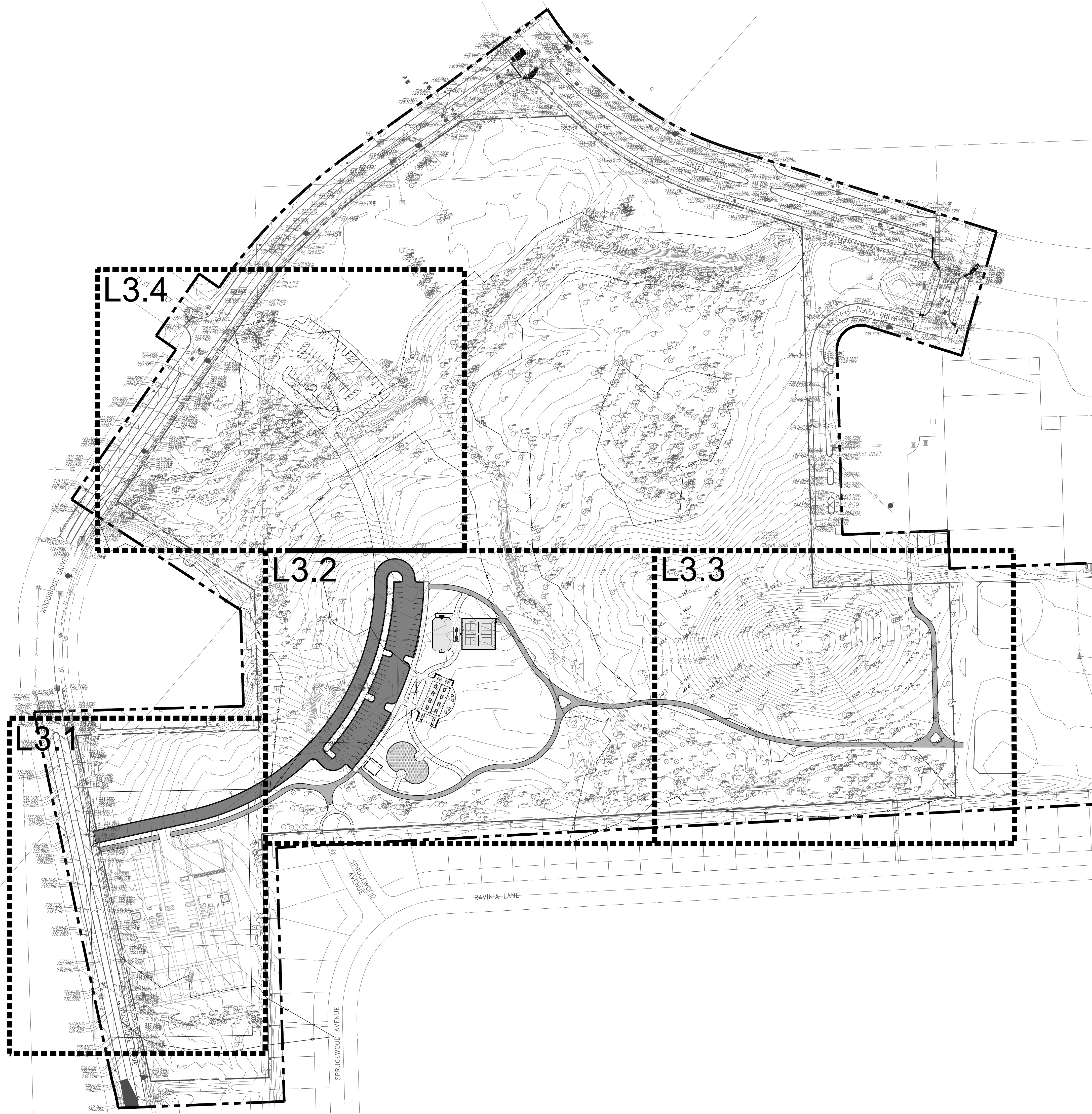
It's free.

**Call before
you dig.**

It's the law.

800.892.0123

J:\Projects\Naperville\Woodridge Park District\Town Centre Park Phase II\Final Design\06 Production\07 CAD\L3.0 Layout and Materials Plan.dwg



LAYOUT NOTES

- Contractor responsible for field layout of all new improvements. Digital files of geometric information will be provided upon request in AutoCAD format. No additional payment will be made for adjustments necessary to construct the work as drawn.
- Contractor responsible to coordinate work in order to obtain approval of all layout by Owners Representative prior to construction. No additional payment will be made to correct work if constructed incorrectly without pre-approval by Owners Representative.
- Contractor responsible to maintain all layout stakes during construction. No additional payment will be made to replace layout stakes.
- Place stakes at edges of sport courts, fields, limits of playground, shelter, and every 25 feet on center along centerline of all pathways for review by the Owner's Representative prior to earthwork operations.
- All walls are dimensioned to Face of Wall unless otherwise noted.
- All dimensions from roadway are from Back of Curb unless otherwise noted.
- All curves and radii to be smooth and not segmented.
- Contractor to provide layout stakes every 10 feet minimum for large arcs where radius points are not accessible.
- Adjustment to stake locations due to discrepancies between coordinates and dimensions is incidental to the contract. No additional payments will be made for this work.
- All roadway widths are measured from edge of pavement to edge of pavement unless otherwise shown on the plans.
- Contractor responsible to take delivery, assemble and install all materials and furnishings per manufacturer's instructions.
- Place control and expansion joints as shown on plans and details for all curbs, walks, walls, steps, and concrete paving. Where joints are not shown, place control joints a maximum of 10 feet on center, expansion joints a maximum of 30 feet on center, and between all separate pours.
- Contractor will maintain use zone requirements within soft surfacing; no use zone will overlap or be tangent unless noted. Adjust playground barrier curb and/or adjacent paving as needed to accommodate play equipment fall zones.
- Coordinate location of storm line with playground footings and obtain Owner's approval prior to installation.
- Layout of soft surface shall be verified in field by landscape architect.
- Refer to specifications for additional conditions, standards and notes.

LAYOUT LEGEND

- Expansion Joint
- Asphalt Paving - Pedestrian
- Asphalt Paving - Vehicular
- Concrete Paving
- Playground Surfacing - Poured in Place Rubber
- Decomposed Granite Paving



22 E. Chicago Avenue
Suite 200A
Naperville, IL 60540
T 630.961.1787
hitchcockdesigngroup.com

PREPARED FOR Woodridge Park District

2600 Center Drive
Woodridge, IL 60517

PROJECT Jubilee Point Park (Town Centre) Final Design Phase Two

7101 Woodridge Drive,
Woodridge, IL 60517

CONSULTANTS
Civil Engineer
Hey and Associates
Volo, IL 60073
T 847.740.0888

Electrical Engineer
Nova Engineering PC
Schererville, IN 46375
T 219.865.3352

Traffic Engineer
Primera Engineers
Chicago, IL 60661
T 312.606.0910

50% Design Development
December 19, 2023
REVISIONS

| No | Date | Issue |
|----|------|-------|
| | | |
| | | |
| | | |
| | | |
| | | |

CHECKED BY
DNF

DRAWN BY
LMB / CAS

SHEET TITLE Layout And Materials Plan - Overall

SCALE IN FEET
1" = 100'



NORTH

SHEET NUMBER



©2023 Hitchcock Design Group



2600 Center Drive
Woodridge, IL 60517

CONSULTANTS
Civil Engineer
ey and Associates
Volo, IL 60073
T 847.740.0888

Electrical Engineer
Nova Engineering PC
Schererville, IN 46375
T 219.865.3352

Traffic Engineer
Primera Engineers
Chicago, IL 60661
T 312.606.0910

1. Contractor responsible for field layout of all new improvements. Digital files of geometric information will be provided upon request in AutoCAD format. No additional payment will be made for adjustments necessary to construct the work as drawn.
2. Contractor responsible to coordinate work in order to obtain approval of all layout by Owners Representative prior to construction. No additional payment will be made to correct work if constructed incorrectly without pre-approval by Owners Representative.

3. Contractor responsible to maintain all layout stakes during construction. No additional payment will be made to replace layout stakes.
4. Place stakes at edges of sport courts, fields, limits of playground, shelter, and every 25 feet on center along centerline of all pathways for review by the Owner's Representative prior to earthwork operations.
5. All walls are dimensioned to Face of Wall unless otherwise noted.
6. All dimensions from roadway are from Back of Curb unless otherwise noted.
7. All curves and radii to be smooth and not segmented.
8. Contractor to provide layout stakes every 10 feet minimum for large arcs where radius points are not accessible.
9. Adjustment to stake locations due to discrepancies between coordinates and dimensions is incidental to the contract. No additional payments will be made for this work.
10. All roadway widths are measured from edge of pavement to edge of pavement unless otherwise shown on the plans.
11. Contractor responsible to take delivery, assemble and install all materials and furnishings per manufacturer's instructions.
12. Place control and expansion joints as shown on plans and details for all curbs, walks, walls, steps, and concrete paving. Where joints are not shown, place control joints a maximum of 10 feet on center, expansion joints a maximum of 30 feet on center, and between all separate pours.
13. Contractor will maintain use zone requirements within soft surfacing; no use zone will overlap or be tangent unless noted. Adjust playground barrier curb and/or adjacent paving as needed to accommodate play equipment fall zones.
14. Coordinate location of storm line with playground footings and obtain Owner's approval prior to installation.
15. Layout of soft surface shall be verified in field by landscape architect.
16. Refer to specifications for additional conditions, standards and notes.

Expansion Joint

Asphalt Paving - Pedestrian

Asphalt Paving - Vehicular

Concrete Paving

Decomposed Granite Paving



50% Design Development
December 19, 2023

REVISIONS

| No | Date | Issue |
|----|------|-------|
| | | |
| | | |
| | | |
| | | |
| | | |

CHECKED BY
DNF

DRAWN BY
LMB / CAS

SHEET TITLE

Layout And Materials Plan

SCALE IN FEET

1" = 30'



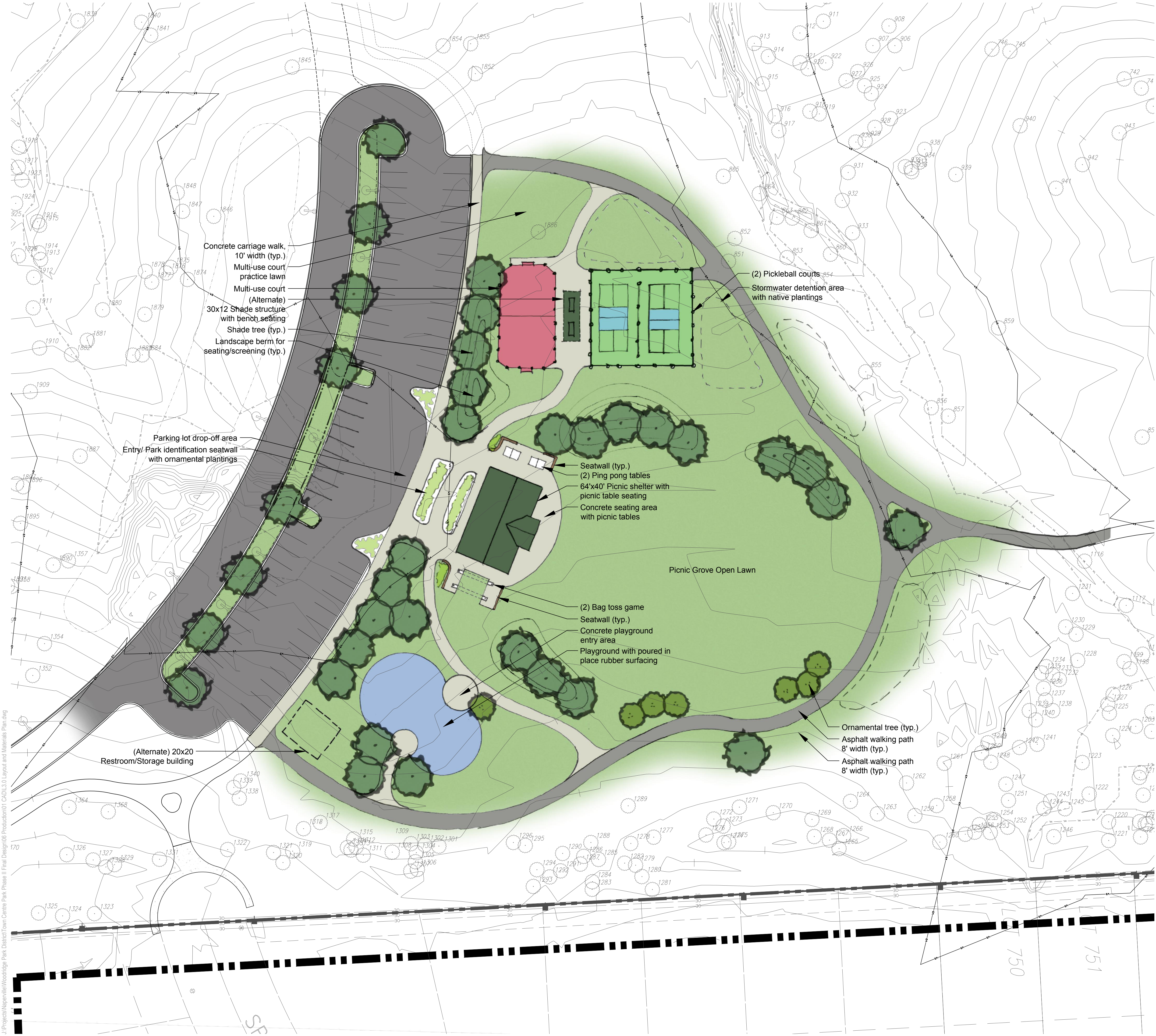
NORTH

SHEET NUMBER



L3.1

©2023 Hitchcock Design Group



PREPARED FOR
**Woodridge Park
District**

2600 Center Drive
Woodridge, IL 60517

PROJECT
**Jubilee Point Park
(Town Centre) Final
Design Phase Two**

7101 Woodridge Drive,
Woodridge, IL 60517

CONSULTANTS

Civil Engineer
Hey and Associates
Volo, IL 60073
T 847.740.0888

Electrical Engineer

Nova Engineering PC
Schererville, IN 46375
T 219.865.3352

Traffic Engineer

Primera Engineers
Chicago, IL 60661
T 312.606.0910

50% Design Development
December 13, 2023

REVISIONS

| No | Date | Issue |
|----|------|-------|
| | | |
| | | |
| | | |
| | | |
| | | |

CHECKED BY
DNF

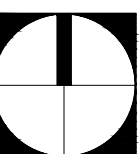
DRAWN BY
LB / CAS

SHEET TITLE
**Layout And
Materials Plan**

SCALE IN FEET
1" = 30'



NORTH



SHEET NUMBER

L3.2

©2023 Hitchcock Design Group



J:\Projects\Naperville\Woodridge Park District\Town Centre Park Phase I\Final Design\06 Production\07 CAD\L3.0 Layout and Materials Plan.dwg
1217
1216
1215

LAYOUT NOTES

- Contractor responsible for field layout of all new improvements. Digital files of geometric information will be provided upon request in AutoCAD format. No additional payment will be made for adjustments necessary to construct the work as drawn.
- Contractor responsible to coordinate work in order to obtain approval of all layout by Owners Representative prior to construction. No additional payment will be made to correct work if constructed incorrectly without pre-approval by Owners Representative.
- Contractor responsible to maintain all layout stakes during construction. No additional payment will be made to replace layout stakes.
- Place stakes at edges of sport courts, fields, limits of playground, shelter, and every 25 feet on center along centerline of all pathways for review by the Owner's Representative prior to earthwork operations.
- All walls are dimensioned to Face of Wall unless otherwise noted.
- All dimensions from roadway are from Back of Curb unless otherwise noted.
- All curves and radii to be smooth and not segmented.
- Contractor to provide layout stakes every 10 feet minimum for large arcs where radius points are not accessible.
- Adjustment to stake locations due to discrepancies between coordinates and dimensions is incidental to the contract. No additional payments will be made for this work.
- All roadway widths are measured from edge of pavement to edge of pavement unless otherwise shown on the plans.
- Contractor responsible to take delivery, assemble and install all materials and furnishings per manufacturer's instructions.
- Place control and expansion joints as shown on plans and details for all curbs, walks, walls, steps, and concrete paving. Where joints are not shown, place control joints a maximum of 10 feet on center, expansion joints a maximum of 30 feet on center, and between all separate pours.
- Contractor will maintain use zone requirements within soft surfacing; no use zone will overlap or be tangent unless noted. Adjust playground barrier curb and/or adjacent paving as needed to accommodate play equipment fall zones.
- Coordinate location of storm line with playground footings and obtain Owner's approval prior to installation.
- Layout of soft surface shall be verified in field by landscape architect.
- Refer to specifications for additional conditions, standards and notes.

LAYOUT LEGEND

- Expansion Joint
- Asphalt Paving - Pedestrian
- Concrete Paving



22 E. Chicago Avenue
Suite 200A
Naperville, IL 60540
T 630.961.1787
hitchcockdesigngroup.com

PREPARED FOR
**Woodridge Park
District**

2600 Center Drive
Woodridge, IL 60517

PROJECT
**Jubilee Point Park
(Town Centre) Final
Design Phase Two**

7101 Woodridge Drive,
Woodridge, IL 60517

CONSULTANTS
Civil Engineer
Hey and Associates
Volo, IL 60073
T 847.740.0888

Electrical Engineer
Nova Engineering PC
Schererville, IN 46375
T 219.865.3352

Traffic Engineer
Primera Engineers
Chicago, IL 60661
T 312.606.0910

50% Design Development
December 19, 2023

REVISIONS

| No | Date | Issue |
|----|------|-------|
| | | |
| | | |
| | | |
| | | |
| | | |

CHECKED BY
DNF

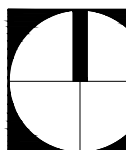
DRAWN BY
LMB / CAS

SHEET TITLE
**Layout And
Materials Plan**

SCALE IN FEET
1" = 30'



NORTH

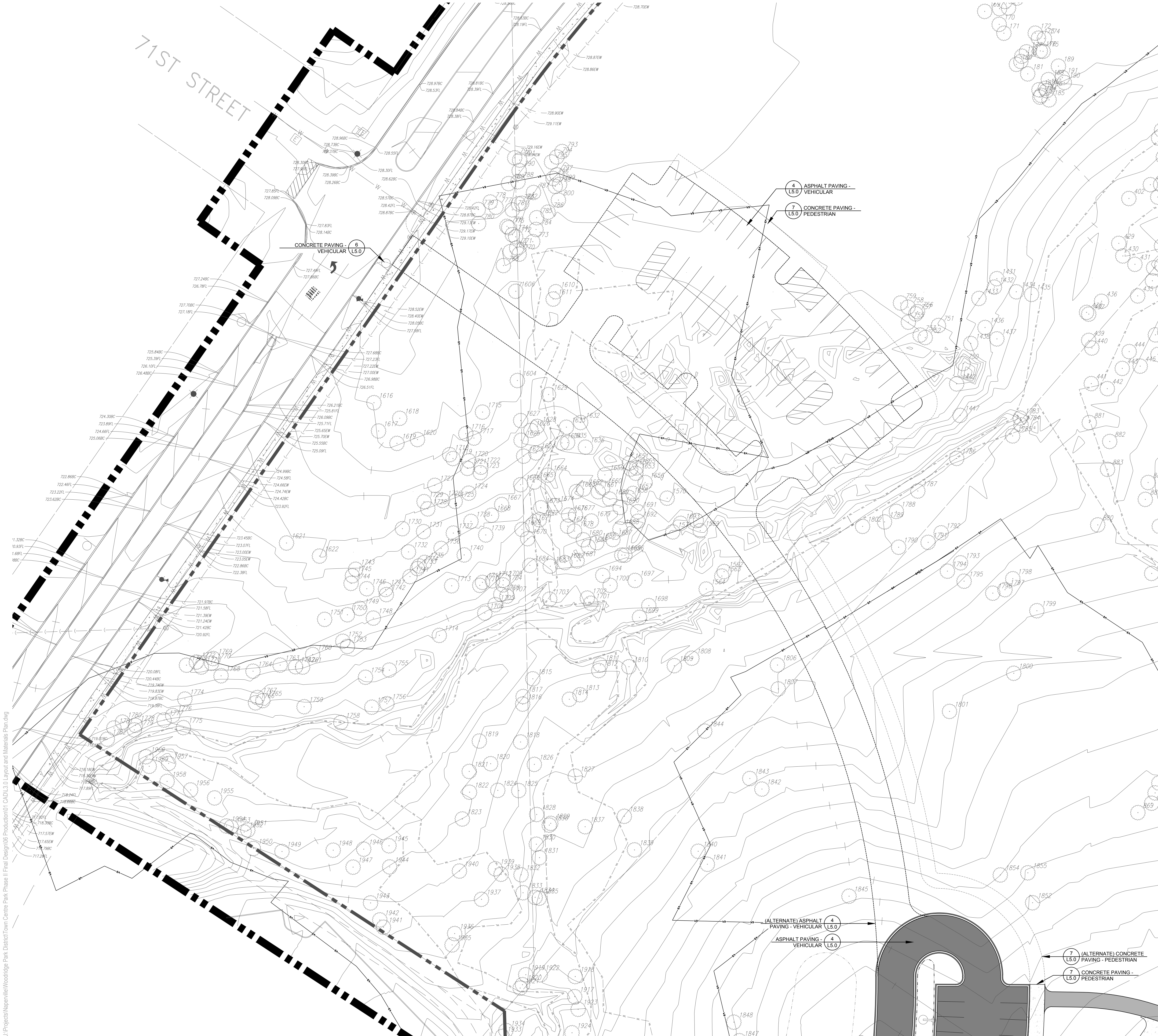


SHEET NUMBER

L3.3

©2023 Hitchcock Design Group

J:\Projects\Naperville\Woodridge Park District\Town Centre Park Phase I\Final Design\06 Production\07 CAD\L3.0 Layout and Materials Plan.dwg



LAYOUT NOTES

- Contractor responsible for field layout of all new improvements. Digital files of geometric information will be provided upon request in AutoCAD format. No additional payment will be made for adjustments necessary to construct the work as drawn.
- Contractor responsible to coordinate work in order to obtain approval of all layout by Owners Representative prior to construction. No additional payment will be made to correct work if constructed incorrectly without pre-approval by Owners Representative.
- Contractor responsible to maintain all layout stakes during construction. No additional payment will be made to replace layout stakes.
- Place stakes at edges of sport courts, fields, limits of playground, shelter, and every 25 feet on center along centerline of all pathways for review by the Owner's Representative prior to earthwork operations.
- All walls are dimensioned to Face of Wall unless otherwise noted.
- All dimensions from roadway are from Back of Curb unless otherwise noted.
- All curves and radii to be smooth and not segmented.
- Contractor to provide layout stakes every 10 feet minimum for large arcs where radius points are not accessible.
- Adjustment to stake locations due to discrepancies between coordinates and dimensions is incidental to the contract. No additional payments will be made for this work.
- All roadway widths are measured from edge of pavement to edge of pavement unless otherwise shown on the plans.
- Contractor responsible to take delivery, assemble and install all materials and furnishings per manufacturer's instructions.
- Place control and expansion joints as shown on plans and details for all curbs, walks, walls, steps, and concrete paving. Where joints are not shown, place control joints a maximum of 10 feet on center, expansion joints a maximum of 30 feet on center, and between all separate pours.
- Contractor will maintain use zone requirements within soft surfacing; no use zone will overlap or be tangent unless noted. Adjust playground barrier curb and/or adjacent paving as needed to accommodate play equipment fall zones.
- Coordinate location of storm line with playground footings and obtain Owner's approval prior to installation.
- Layout of soft surface shall be verified in field by landscape architect.
- Refer to specifications for additional conditions, standards and notes.

LAYOUT LEGEND

| | |
|--|-----------------------------|
| | Expansion Joint |
| | Asphalt Paving - Pedestrian |
| | Asphalt Paving - Vehicular |
| | Concrete Paving |



22 E. Chicago Avenue
Suite 200A
Naperville, IL 60540
T 630.961.1787
hitchcockdesigngroup.com

PREPARED FOR Woodridge Park District

2600 Center Drive
Woodridge, IL 60517

PROJECT Jubilee Point Park (Town Centre) Final Design Phase Two

7101 Woodridge Drive,
Woodridge, IL 60517

CONSULTANTS
Civil Engineer
Hey and Associates
Volo, IL 60073
T 847.740.0888

Electrical Engineer
Nova Engineering PC
Schererville, IN 46375
T 219.865.3352

Traffic Engineer
Primera Engineers
Chicago, IL 60661
T 312.606.0910

50% Design Development
December 19, 2023
REVISIONS

| No | Date | Issue |
|----|------|-------|
| | | |
| | | |
| | | |
| | | |
| | | |

CHECKED BY
DNF

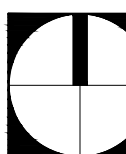
DRAWN BY
LMB / CAS

SHEET TITLE Layout And Materials Plan (Alternate)

SCALE IN FEET
1" = 30'



NORTH



SHEET NUMBER

L3.4

©2023 Hitchcock Design Group